



arcon
Safety Radio Remote Controls

WE ARE ARCON





ARCON

ARCON is one of the most innovative manufacturers of high-quality safety radio remote controls. Our strength lies in developing tailored solutions for all areas of application which meet the tough requirements and expectations of our customers. Our devices reliably control construction machinery, industrial plants, municipal and special vehicles and much more.

Our commitment to safety, flexibility and efficiency drives us to achieve outstanding performance.



INDUSTRY

Whether automatic crane or forklift truck - with your ARCON safety radio remote control system, you have everything under control at all times.



CONSTRUCTION

ARCON develops your highly efficient solution for construction machines.



HYDRAULICS

Applications in the field of hydraulics, whose areas of use go far beyond the classic fields of activity such as cranes and concrete pumps, are among our main areas of activity.



SPECIAL VEHICLE

With your safety radio remote control system from ARCON, you can control your construction machine, your municipal vehicle or your agricultural equipment from a safe distance.



EXPLOSION-PROOF

ARCON offers you a wide portfolio of explosion-protected products. The new generation EX is not only used in classic applications such as in mining and the chemicals industry, but also in offshore applications.



SPECIAL SOLUTIONS

The core competence of our team lies in the development of customised, tailored solutions. We work with you in implementing all your radio remote control requirements as efficiently and economically as possible.



RELIABILITY UNDER THE TOUGHEST CONDITIONS

Safety radio remote controls from ARCON are used worldwide, even underground. We offer a broad range of approvals in order to meet all requirements and challenges.

Operation from a safe distance:
With construction crane radio remote controls from ARCON, certified by TÜV, you have your load under control at all times.

Clear view:
From a safe distance to the hazard zone. ARCON is a premium manufacturer in the construction industry.



Maximum safety:
Safety radio remote control systems from ARCON are used worldwide underground. We offer a broad range of approvals in order to meet all requirements and challenges.



You are in good hands:
At ARCON, we place great importance on personal service and a high degree of availability. We are your reliable partner!

We would be pleased to inspire you with the numerous options for using an ARCON safety radio remote control system. Contact the ARCON Team and experience for yourself the multitude of possible applications!

PUSHBUTTON DEVICES LIGHTWEIGHT AND HANDY



PUSHBUTTON DEVICE

HANDY PUSH BUTTON DEVICE FOR DIGITAL APPLICATIONS

The TGD-8 pushbutton device is extremely versatile, especially in the industrial sector, but also for mobile and customised applications. The transmitter has a particularly ergonomic shape, making it easy and intuitive for the user to handle. To ensure the most efficient operation for the user, the function keys can be flexibly assigned and configured. In order to protect your device against unauthorised use, we offer state-of-the-art security features, such as userdefined security codes.

TGD-8 ERGONOMIC DESIGN



Thanks to its modern, ergonomic design, the TGD-8 keypad is unique in its class. Its new operating concept enables flexibility in each area of use. The TGD-8 offers you a STOP switch, a toggle switch and 8 push-buttons, each of which has a two-step design and can be adapted to your application by means of individual labelling. Optional, we offer up to 6 varicoloured feedback LEDs for your machine's status display.

PROTECTION CLASS:	IP 65
TEMPERATURE RANGE:	-20 to +60° C
WEIGHT:	approx. 300g
DIMENSIONS:	80 x 45 x 175 mm (B/D/H)
FREQUENCY RANGE:	432-481/863-930MHz; 2.4GHz
BATTERY TECHNOLOGY:	Integrated Li-Ion
OPERATING TIME:	up to 80 hours



Industry



Construction



Hydraulics



Special
Vehicles



Special
Solutions



T-SERIES

T-SERIES THE NEXT GENERATION IN NEW DESIGN



T-SERIES

OPTIMISED FOR THE BEST OVERVIEW

The T-Series is a state-of-the-art series. It features an attractive design and reliable technology. The T-Series consists of three different transmitters, which offer space for sufficient switches, buttons and joysticks. All three available transmitters provide the user with highly intuitive handling and the best overview for all of your application's information through state-of-the-art colour graphic displays (GDC 3.5 and GDC 4.3). Naturally, all transmitters are equipped according to the needs of our customers.



T3 UNIQUE DESIGN

The special feature of the T3 transmitter is its versatility. You can equip it according to your individual needs and choose between key switches, toggle switches, push-buttons and joysticks with digital or analogue functions. In addition, the T3 transmitter has LED indicators and an optional graphic display for the clear transmission of information.

PROTECTION CLASS:	IP 65
TEMPERATURE RANGE:	-20 to +60° C
WEIGHT:	approx. 1400g
DIMENSIONS:	220 x 140 x 150 mm (B/D/H)
FREQUENCY RANGE:	432-481/863-930MHz; 2.4GHz
BATTERY TECHNOLOGY:	Exchangeable battery NiMH
OPERATING TIME:	up to 20 hours



Industry



Construction



Hydraulics



Special
Vehicles



Special
Solutions





T5 HIGH PERFORMANCE

Thanks to its larger housing, the T5 transmitter can be equipped with an even greater variety of controls and information sources. The freely programmable GDC 3.5 colour graphic display can be easily integrated.

T7 MAXIMUM NUMBER OF OPTIONS

The T7 transmitter is the largest transmitter within the T-Series. It provides you with the maximum space for positioning your controls. At the customer's request, a 4.3" colour graphic display with optional video feedback can be installed. Thus, you only always have control of the status, but also of your machine's working area.

PROTECTION CLASS: IP 65
TEMPERATURE RANGE: -20 to +60° C
WEIGHT: approx. 1800g
DIMENSIONS: 290 x 180 x 155 mm (B/D/H)
FREQUENCY RANGE: 432-481/863-930MHz; 2.4GHz
BATTERY TECHNOLOGY: Exchangeable battery, NiMH oder Li-Ion
OPERATING TIME: up to 20 hours



PROTECTION CLASS: IP 65
TEMPERATURE RANGE: -20 to +60° C
WEIGHT: approx. 2000g
DIMENSIONS: 370 x 185 x 170 mm (B/D/H)
FREQUENCY RANGE: 432-481/863-930MHz; 2.4GHz
BATTERY TECHNOLOGY: Exchangeable battery, NiMH oder Li-Ion
OPERATING TIME: up to 20 hours



Manoeuvring loads with the utmost precision: ARCON's safety radio remote controls are your highly efficient companion in the most difficult situations.



EX-SERIES SAFE UNDER EXTREME CONDITIONS



EXPLOSION-PROOF

THE NEW GENERATION EX

The topic of explosion protection is becoming increasingly important in all our areas of use. The new generation EX is not only used in classic applications such as in mining and the chemicals industry, but also in the processing industry. In order to meet all requirements, we offer a wide range of approvals for the field of explosion protection.



T5 EX NEW ERGONOMIC AND ROBUST

The new T5 EX transmitter is setting standards in the combination of functionality and design in the field of explosion protection. You can equip the T5 transmitter according to your individual needs and choose between key switches, toggle switches, push-buttons and joysticks with digital or analogue functions.

APPROVALS:	ATEX, IECEx, NEC 500/505
PROTECTION CLASS:	IP 65
TEMPERATURE RANGE:	-20 to +60° C
WEIGHT:	approx. 1800g
DIMENSIONS:	290 x 180 x 155 mm (B/D/H)
FREQUENCY RANGE:	419MHz - 869MHz
BATTERY TECHNOLOGY:	Exchangeable battery NiMH
OPERATING TIME:	up to 10 hours



Industry



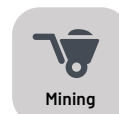
Special Vehicles



Special Solutions



Offshore-Chemistry



Mining





NEW

T7 EX

MAXIMUM NUMBER OF CONTROLS

The T7 EX transmitter provides you with the maximum space for positioning your controls. On customer request, LED displays or a state-of-the-art graphic display can be integrated. An optional cable control incl. power supply can raise the availability of your radio remote control to the maximum.

APPROVALS:	ATEX, IECEx, NEC 500/505
PROTECTION CLASS:	IP 65
TEMPERATURE RANGE:	-20 to +60° C
WEIGHT:	approx. 2000g
DIMENSIONS (B/D/H):	370 x 185 x 170 mm (B/D/H)
FREQUENCY RANGE:	419MHz - 869MHz
BATTERY TECHNOLOGY:	Exchangeable battery NiMH
OPERATING TIME:	up to 10 hours



Industry



Special Vehicles



Special Solutions



Offshore-Chemistry



Mining

Underground: ARCON offers individual solutions for the mining industry. Whether roadheader or tunnel boring machine, we have your tailor-made solution.



RECEIVER

RECEIVER THE SECURE CONNECTION TO THE MACHINE



RECEIVER

EASY AND QUICK TO CONFIGURE

Most of ARCON's receivers are fitted with a programmable motherboard. This enables the ARCON Team to respond to customer requests as fast as possible and offers maximum flexibility.



NEW

R3 HOUSING VARIANT SMALL

The smallest receiver housing has been specially designed for mobile applications with limited space. Thanks to its compact design, it can also be mounted in places that are difficult to access. Both digital and serial interfaces can be implemented in this housing variant.

NEW

R5 HOUSING VARIANT LARGE

The R5 is the universal housing of ARCON. This design has many digital standard receivers. With the R5 housing variant, analogue outputs can be conveniently implemented for control in loading cranes or special machines. One of our standard proportional receivers, such as the RCV BMS-2, is ideal for this type of application.

INTERFACES: RS 232/485, CANopen, CANopen Safety, DeviceNet, J1939, Profibus, Industrial Ethernet, Relay outputs, Transistor outputs
PROTECTION CLASS: IP 65
TEMPERATURE RANGE: -20 up to +70° C
WEIGHT: approx. 800g
DIMENSIONS: 165 x 115 x 65 mm
FREQUENCY RANGE: 419/429/432-481/863-930MHz; 2.4GHz
OPERATING VOLTAGE: 8 - 30 VDC

INTERFACES: RS 232/485, CANopen, DeviceNet, J1939, Profibus, Industrial Ethernet, relay outputs, transistor outputs, voltage outputs, current outputs
PROTECTION CLASS: IP 65
TEMPERATURE RANGE: -20 up to +70° C
WEIGHT: approx. 1800g
DIMENSIONS: 245 x 165 x 90 mm
FREQUENCY RANGE: 419/429/432-481/863-930MHz; 2.4GHz
OPERATING VOLTAGE: 8 - 30 VDC, 48 - 240 VAC, depending on equipment



RECEIVER RCV CBB-1 LATEST RECEIVER GENERATION

NEW

All-rounder in a compact design

The RCV CBB-1 represents the latest generation of compact interface receivers from ARCON. This new receiver offers a multitude of possibilities, such as two separate CAN interfaces, data logging, error diagnosis via CAN bus and an optional cable control.



INTERFACES:	CANopen, CANopen Safety, J1939, Industrial Ethernet
PROTECTION CLASS:	IP 65
TEMPERATURE RANGE:	-20 up to +70° C
WEIGHT:	approx. 800g
DIMENSIONS:	165 x 115 x 65 mm
FREQUENCY RANGE:	419/429/432-481/863-930MHz; 2.4GHz
OPERATING VOLTAGE:	8 - 30 VDC



Industry



Construction



Hydraulics



Special Vehicles



Special Solutions

ARCON receivers can be mounted directly on the crane. The receivers are protected against the ingress of dust and water and have a breathable GoreTex membrane.



NEW

INDUSTRIAL ETHERNET

MAXIMUM CONNECTIVITY – MAXIMUM FLEXIBILITY

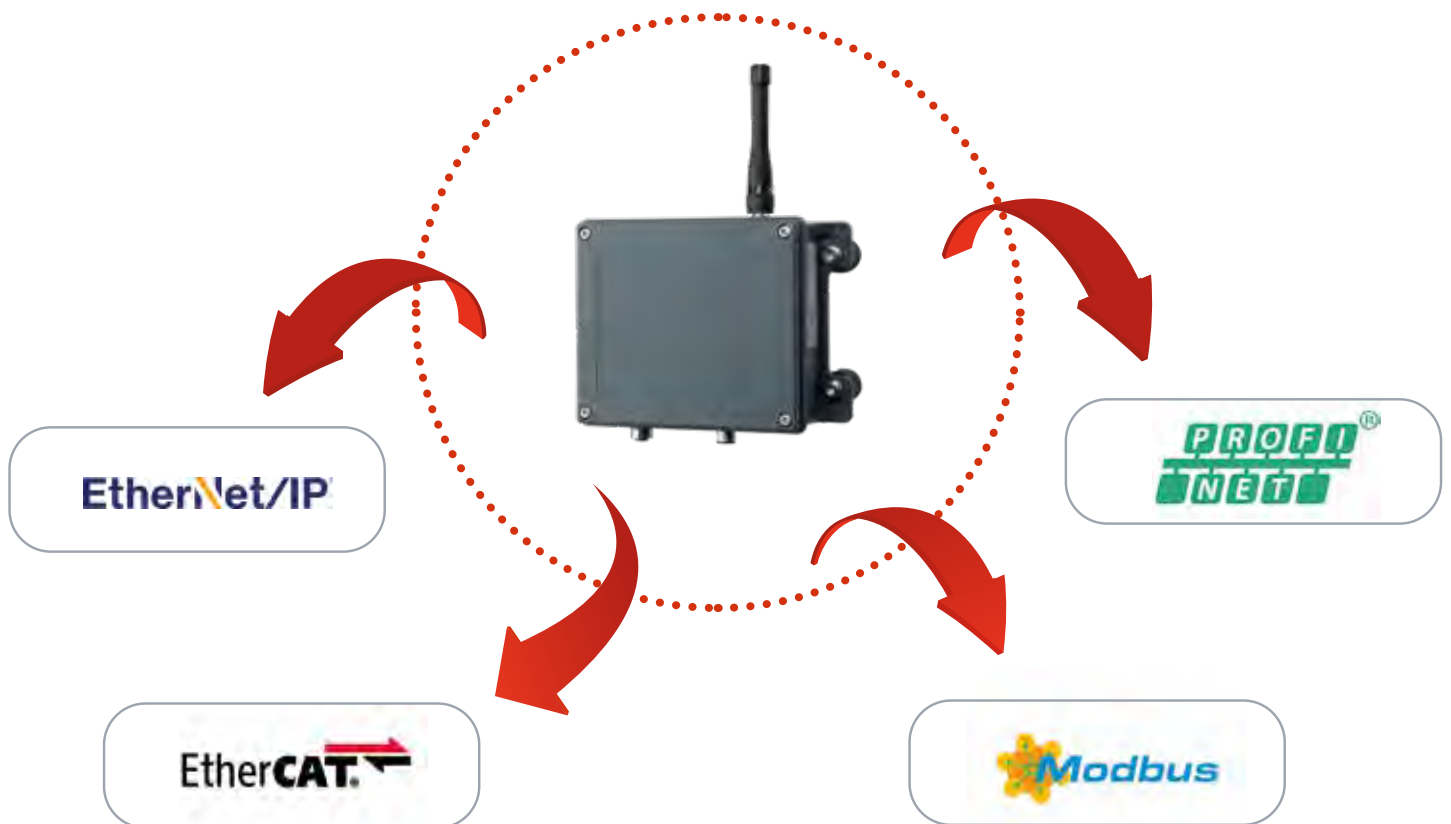
As part of Industrial Ethernet, new networking technologies have been created that adapt the Ethernet standard to industrial environmental conditions.

INDUSTRIAL ETHERNET SOLUTIONS AT ARCON

ARCON has a multitude of possibilities in the field of Industrial Ethernet. With the RCV 14+ Industrial Ethernet, ARCON offers a universal receiver that can be adapted to your requirements by means of software. Various interfaces such as PROFINET, EtherNet IP, ModBus-TCP and EtherCAT are available. ARCON uses two RJ45 plugs for the standard version RCV 14+ Industrial Ethernet.

This means you do not need an additional switch and can avoid additional expenses.

Of course, you can also get your desired plug connection from ARCON.



COLOURS



OUR COLOUR PALETTE

NEW

AVAILABLE COLOURS FOR THE T-SERIES

ARCON transmitters are delivered by default in the colour combination grey and red. The bright red offers an excellent contrast to the switches, joysticks and the labelling. This gives you an optimal overview of all functions of your ARCON transmitter.

The option of choosing the colours is becoming increasingly important to our customers. Therefore, with the T3, T5 and T7, ARCON offers you the standard option of having the lower part of the housing in grey or blue.

With the TGD-8, you can choose between the colours grey and blue for the upper part of the housing.



With ARCON, you can choose your colour for all three lower housing parts. The top parts of the TGD-9 housing are also available in grey or blue.

THE PERFECT ASSEMBLY OF YOUR RADIO REMOTE CONTROL

INDIVIDUAL ASSIGNMENT

ARCON's safety radio remote controls are perfectly matched to your application!

Our specialists work together with you to find the best possible positioning of all controls.

At ARCON, the ergonomics and user-friendliness of all joysticks, toggle switches, push-buttons and potentiometers are at the forefront. The distribution of information sources such as LEDs and displays will be discussed with you individually. Get your customised solution at ARCON!

Well informed: The graphic displays and feedback LEDs on the transmitter keep you updated on the machine's status.



The machine stops reliably by means of the ARCON stop, which is positioned where you prefer it.

ARCON equips your transmitter according to your individual needs. Choose the appropriate graphic displays, buttons, switches, LEDs and potentiometers for your application.



Everything under control: With robust joysticks from ARCON, you can safely and comfortably control the most important movements of your machine.

With the individual assembly of your ARCON radio remote control, we give you maximum flexibility.



DISPLAYS

GDM-2 display

The GDM-2, with its resolution of 132x32 pixels, is ideally suited to the T3 transmitter and offers an optimal overview of your machine data.



DISPLAYS

EVERYTHING IN FOCUS

INDIVIDUAL

DISPLAYS IN DIFFERENT VERSIONS

Information sources are becoming increasingly important for operators of construction machinery, agricultural equipment or when operating municipal vehicles. ARCON has the optimum solution for every individual application. Whether with the monochrome displays of the **GDM series** or the colour graphic displays of the **GDC series**, ARCON has the individual solution for your machine.

The displays were specially developed for outdoor use and can be easily read, despite strong sunlight. With the displays of the GDC series, ARCON offers a wide range of possibilities. These displays have their own processor, with which you can independently program the displays according to your individual needs.

The displays of the GDM series are available in two versions. The GDM-2 is the smaller one, with a resolution of 132x32 pixels. The larger version, the GDM-1, offers a resolution of 128x64 pixels. Both displays can be freely controlled using ASCII characters.



GDC 4.3 display

ARCON's largest colour graphic display, the GDC 4.3, integrates perfectly with the T7 transmitter. With its resolution of 480x272 pixels, you always have all important machine data at hand.



GDM-1 display

The larger GDM-1, with its resolution of 128x64 pixels, can be integrated in both the T5 transmitter and the T7 transmitter. With the integrated backlight, you have everything in view even in the most adverse conditions.

STATE-OF-THE-ART COLOUR GRAPHIC DISPLAYS

ARCON's colour graphic displays are available in two sizes (3.5", 4.3").

Both displays can be freely programmed using QT. ARCON provides you with a virtual machine with a pre-configured Linux development environment.

This gives our customers maximum flexibility in the design of their display, and they can change all important settings such as font, font size, backlight and the duty cycle of the display.

A brightness sensor for automatic control of the backlight is available as an option for both displays.

GDC 3.5 display

The GDC 3.5 is ARCON's smaller colour graphic display. With its resolution of 320x240 pixels and the optional brightness sensor, this display is perfect for use with construction machinery, municipal vehicles and even firefighting monitors.



SYSTEM OPTIONS



BEST OVERVIEW FROM A SAFE DISTANCE

INNOVATIVE

VIDEO SYSTEM OPTION

With the ARCON video system, you always have the best overview of your crane, your construction machinery or your load. This assistance system is compatible with the T5 and T7 housing variants. With the two colour graphic displays of the GDC series, you can choose between a 3.5" or 4.3" display. With both display variants, you can receive up to 4 camera signals. In combination with the GDC 4.3, it is possible to simultaneously display camera images as well as data feedback. You can use your own cameras or purchase a suitable camera from ARCON. If you want to use your own camera, it only needs a PAL or an NTSC signal.



- » Real-time transmission
- » Reach of up to 75 metres
- » Display resolution GDC 3.5: 320x240 pixels
Display resolution GDC 4.3: 480x272 pixels
- » up to 4 cameras possible
- » Switchover using rotary selector
- » Camera connection using PAL and NTSC interfaces
- » Night vision mode
- » External video "transmitter" available as an option
- » Video feedback with splitscreen and simultaneous data feedback on graphic display GDC 4.3 available

CAMERA

ARCON also offers robust cameras that are compatible with your application. The IP69K-protected devices transmit the machine's image in real time and have motion sensor and night vision mode. With visual contact, a reach of approx. 75 m is possible.

Resolution	960x480 pixels
Viewing angle:	150°
Infra-red reach:	approx. 10 m
Protection class:	IP69K



SAFETY FIRST FOR MORE SAFETY

At ARCON, safety is our top priority. ARCON offers a wide range of tried-and-tested and newly developed safety features:

At ARCON, **STOP** can be implemented up to **CAT. 3 PLe / SIL3**. It puts your machine in a safe state when in dangerous situations.

With the safe **DIGITAL** and **ANALOGUE COMMANDS** over CANopen Safety (**UP TO CAT. 3 PLe / SIL3**), ARCON offers the highest level of safety.

An optional **TILT SWITCH** is used to detect the inclination of the transmitter or the operator. You can specify the angle and time at which a signal is triggered. Time and angle can be set separately in each direction in the X and Y axes. The Z axis is fixed.

ARCON's **TWO-HAND OPERATION** ensures that both of the user's hands have to be on the radio transmitter. Only then, is it possible to operate the machine.

Another safety feature is the **PUSH TO OPERATE** function. It can be provided either in the joystick (with a push-button) or as a separate push-button anywhere on the transmitter. The customer can freely process this signal in the machine control.

Using the **LOGIN / LOGOUT** system option, you can operate a large number of receivers with just one transmitter. This option can be used for very complex applications, such as the control of offshore cranes in wind farms. ARCON also offers the option of working with two transmitters and one receiver in the LOGIN / LOGOUT procedure.

With the **INTEGRATED CHARGING FUNCTION** for the E-Pack S battery, you can charge your radio transmitter WITHOUT INTERRUPTION during operation.

A special feature is the optional cable control, allowing you to switch between radio and cable operation WITHOUT INTERRUPTION.

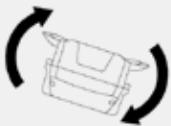
The LED display always informs you of the current status of the INTEGRATED CHARGING FUNCTION.

SAFETY FEATURES



Our ARCON safety radio remote controls are always developed with the aim of making operation and work more economical and safer. Choose from a large portfolio of safety features.

Tilt switch



Two-hand operation



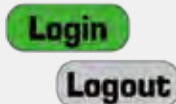
Enabling switch



Push to operate



Login/Logout



STOP



Charging function in the transmitter



E-Pack S only

APPROVALS

ARCON relies on the highest quality for its products. We already lay the foundation stone for this during the development phase. At ARCON, the concepts of new products are already discussed and agreed with accredited institutes. Development in line with TÜV is the prerequisite for a successful product that is tested and certified according to the latest standards.

ISO 9001:2015

ARCON is regularly audited by independent testing institutes for compliance with operational procedures. We are very proud that these audits are passed with flying colours and we have a consistently high level of quality according to ISO 9001:2015.

LARGE PORTFOLIO OF RADIO APPROVALS

ARCON safety radio remote controls are certified with various country-specific approvals, such as the FCC for USA, EAC for Russia and MIC for Japan. This is only a small excerpt from ARCON's portfolio. For further information, please contact the ARCON team.

TÜV TYPE EXAMINATION CERTIFICATE

ARCON has a large number of TÜV type examination certified radio remote controls pursuant to EN ISO 13849-1 and EN 62061. These examination certificates are being constantly extended.

EX PRODUCTS

ARCON has extensive EX approvals such as ATEX, IECEx and NEC 500/505 for the chemicals industry, mining and for many applications in the manufacturing industry.

DNV-GL TYPE EXAMINATION CERTIFICATE

For your offshore applications, ARCON offers a variety of products, which have a DNV-GL examination certificate.

CERTIFICATES ON REQUEST

If you need additional certificates in order to use an ARCON safety radio remote control for your application, please contact our ARCON team.



Spare parts and accessories

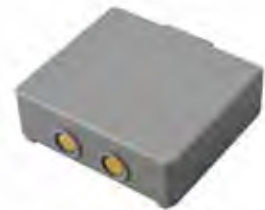
Due to the high load of radio remote controls, spare parts are occasionally needed after a certain period of time. You can easily place your order with ARCON by telephone or email. We always provide you with a helpful ARCON employee at your side and take care of the immediate delivery.



CHARGER BCM-1
 100-240VAC /
 for E-Pack S Battery
 EU, UK, US & AUS ADAPTER



also available with:
 9-36VDC VEHICLE ADAPTER 9-36VDC FLAT RECEPTACLES



BATTERY E-PACK S
 NiMH 3,6V/1,9Ah



CHARGER BCP-M
 100-240VAC /
 for E-Pack M Battery
 EU, UK, US & AUS ADAPTER



also available with:
 9-36VDC VEHICLE ADAPTER 9-36VDC FLAT RECEPTACLES



BATTERY E-PACK M
 Li-Ion 3,6V/8,6Ah



BELLY BELT WITH PADDING
 T-Series



NECK BELT WITH PADDING
 T-Series



SHOULDER BELT
 TGD



ADDRESSES

ARCON GmbH
Wiesnerstraße 20
4950 Altheim | Austria
+43 / 7723 / 21501-0
info@arconremote.com

ARCON GmbH
Branch Office Germany
Adalbert-Stifter-Straße 2
84085 Langquaid | Germany
+49 / 9452 / 93375-0
info@arconremote.com

www.arconremote.com



THERE FOR YOU WORLDWIDE

The entire ARCON team is aware of the great importance that safety radio remote controls now have for many companies. Therefore, ARCON places a high value on personal service and a high degree of availability.

Partners

FOR YOUR SAFETY.

arcon

Safety Radio Remote Controls

ARCON GmbH
Wiesnerstraße 20
4950 Altheim | Austria
+43 / 7723 / 21501-0
info@arconremote.com

ARCON GmbH
Branch Office Germany
Adalbert-Stifter-Straße 2
84085 Langquaid | Germany
+49 / 9452 / 93375-0
info@arconremote.com

www.arconremote.com

Photos | Graphs | Image rights |
Copyright: ARCON GmbH
istockphoto.com, shutterstock.com,
Mirek Kolar
Design: komma2 Kuchenbecker